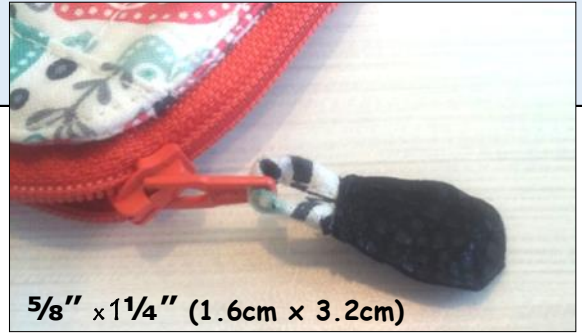


Itty Bitty Zipper Pull Tab

featured on Double Clutch passport wallet



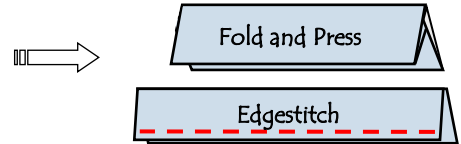
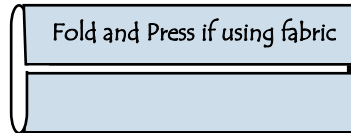
5/8" x 1 1/4" (1.6cm x 3.2cm)

SUPPLIES

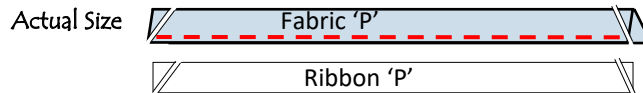
- ◇ **Faux Leather scrap**—Two 1" (2.5cm) squares
- ◇ **Fabric scrap**—5/8" x 2 1/2" (1.6cm x 6.4cm)
OR sturdy ribbon 1/4" x 2 1/2" (5mm x 6.4cm)
- ◇ **Wonder Tape** or glue
- ◇ **Thread(s)** to match fabric and faux leather
- ◇ **Hand sewing needle**

INSTRUCTIONS

1. Cut pieces (templates at bottom of page).
2. Fold, press and edgestitch 'P' (if using fabric). Cut ends diagonally.



Tip: Use tissue paper under fabric to help machine feed narrow strip.



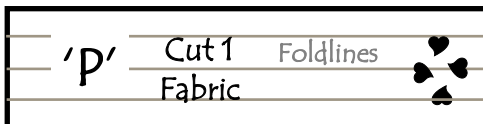
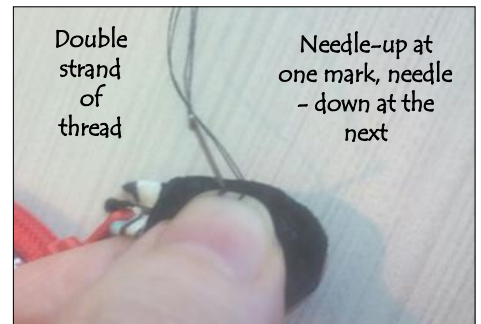
3. Apply Wonder Tape to wrong side of Tabs.



4. Insert 'P' through zipper pull, fold in half with stitched edges butted together, and place on wrong side of one tab—Attach other tab to 'P', making a sandwich.



5. **Hand stitch outer edges of tabs:**
Tip: Mark your thumbnail with two marks to make even-length stitches.
Tip: Hide knots between tabs for neat finish. **Tip:** For stitches that look the same on both sides of the tab, do NOT do a running stitch; instead, pull needle and thread all the way through the sandwich before going back through to the other side.



← Cut 2 Faux Leather
Note stitches at bottom corners



Double Clutch passport wallet at sewtogether.net and at craftsy.com